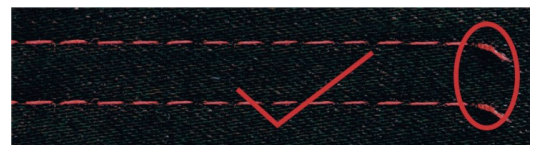




BRUCE R6000 / R6000 H-Jeans

- 1 Nadel Steppstich schnellnäher
- Voll-Elektronik
- stich Länge max. 5 mm
- Kurz Faden Abschneider
- Anfang- Endverriegelung
- Nähfußlüftung
- 220 Volt Elektronik Direct-Drive Step-Motor / Digital
- Geschwindigkeit max. 5000 S.p.m.
- Int-Nählicht,5xSpuhle,4xNähfuss,10xNadel
- USB,
- Montiert Tisch .55x105 cm
- Garantie. 2 Jahre

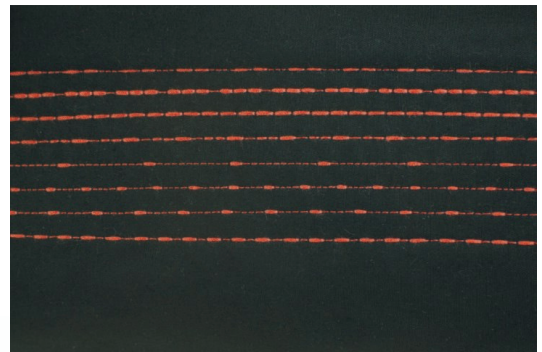
Preis . 1150,- EUR excl. MwSt.

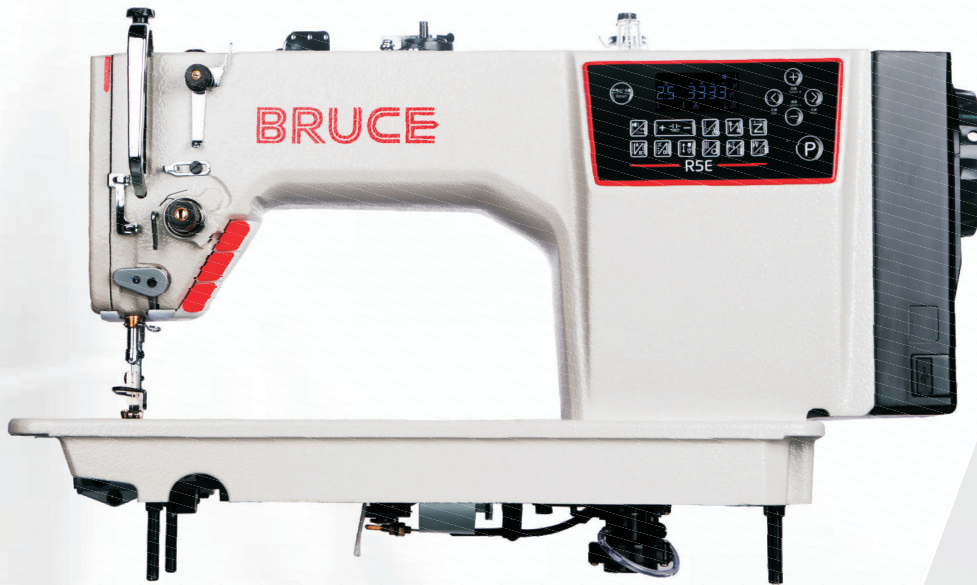


自动锁线
Automatic thread lock



剪线后效果
Effect after thread trimming





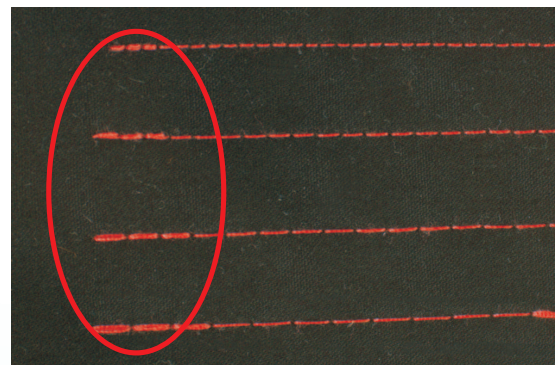
怕跳针 · 怕断线 · 就用布鲁斯
NO BREAK · NO SKIP

BRC- R5E-Q

Computerized Lockstitch Machine With Electronic Control Stitch Length System



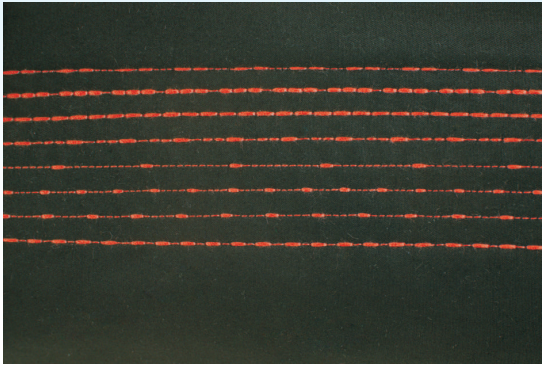
High precision stitch



Automatic thread wiper, beautiful stitch

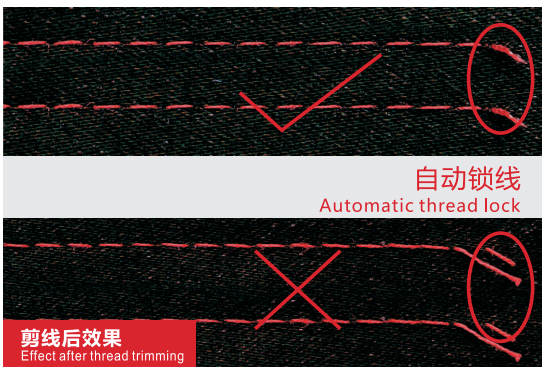
needle gauge differences can reaches 0.1mm when controlled by step motor. Needle gauge can be locked according to users' demands to avoid freely adjustment.

Overlapping stitch can be perfectly realise in any stitch length, front and back thread remaining lock function is available.



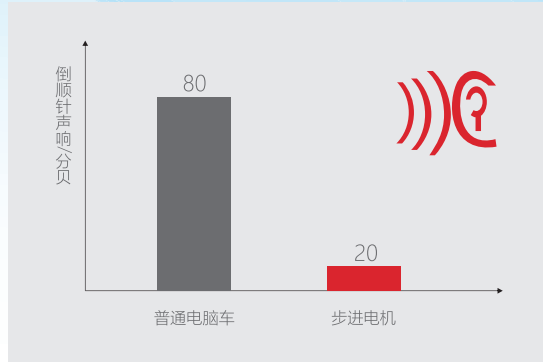
variable stitches, fashionable and beautiful

Different sewing stitch is available based on different clothes requirements. And editable pattern enables more fashionable and beautiful stitches.



Noiseless reverse sewing, quiet and comfortable

No need to trim thread remaining again, which avoids trimming risks and save labour, time and money.



Noiseless reverse sewing, quiet and comfortable




Step motor controlled reverse sewing structure by scientific design achieves noiseless reverse sewing, which enables a quiet and comfortable environment.



Super USB Port

Innovated USB can not only charge, also it can run fan and upgrade software.

Specification

							薄料/中厚料	厚料		$\frac{NW}{GW}$ (kg)
R5E-Q	DBx1 11-18#2	2	5	5-13	5000	√	/	695X295X550	41/47	
R5E-HQ-M	DBx1 11-18#2	2	5	5-13	5000	√	/	695X295X550	41/47	
R5E-HQ	DPx5 18-21#2	2	5	5-13	3500	√	√	695X295X550	41/47	
R5E-CQP	DBx1 11-18#2	2	5	5-13	5000	√	/	695X295X550	41/47	

Stand configuration is (Qixing) control box .Japanese hook, auto trimmer, auto reverse sewing, auto presser foot lifter, electronic tension post, 5mm stitch length, 7mm stitch length is optional, P means multiples of 1.6 hook