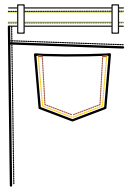


**new**

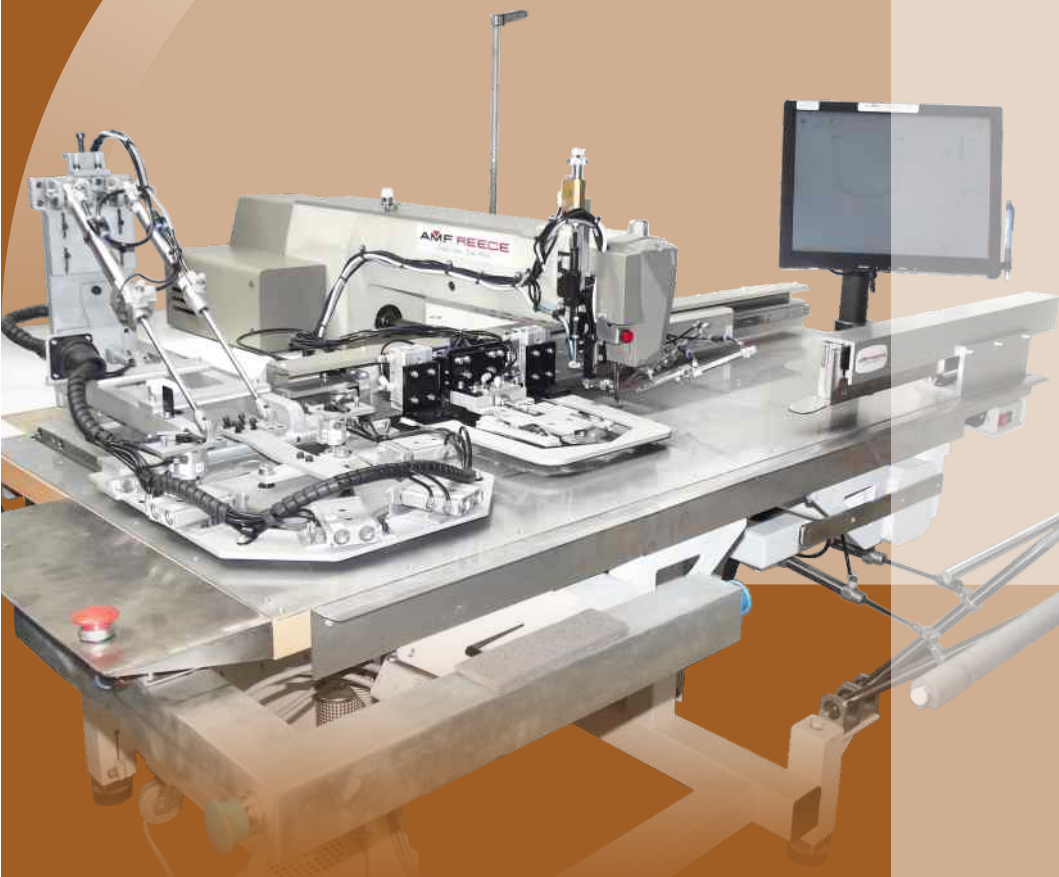
**PS 250**



## **Automatic Double Colour Pocket Setter for Jeans and Work Wear**

**The fully automatized machine for pocket  
setting including creasing process.**

The machine folds pocket cloths and fit into a designated size and sew it. PS 250 productivity is much higher than the operation using steam iron, lockstitch machine and bartacking.



**AMF<sup>®</sup> REECE**  
*Better Ideas, Better Made*

# Standard Features

## ■ Touch control panel

The pocket style is programmable directly on the machine with internal memory for 1,000 patterns. High flexibility and effective machine control is thus ensured since no external programming device is requested.

## ■ High sewing reliability and even seam quality

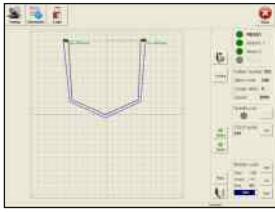
Lock-stitch sewing style utilizing a CB-looper ensures high sewing reliability. Together with an advanced clamping mechanism complemented by an oscillating presser foot ensures even seam quality and outstanding result.

## ■ Double colour

Two different colors can be used during one sewing cycle. Thanks to the two needle-bars system, each thread is permanently threaded to a dedicated needle-bar guaranteeing rapid color exchange.

## ■ Any shape of pocket, any pattern

Square, asymmetric pockets or any other shape can be sewn by PS 250. It can be easily designed on the machine control panel and quickly checked directly on the jeans pocket. Conversion kit enables using this machine even for frequently changing pocket styles, or for small production series.



Pocket Edges Folding	Yes
Two-Thread Color Option	Yes
Stitch Type	301 Lockstitch
Sewing Speed	2,500 st/min continuously (no braking in corners) (1,000 st/min for zig-zag)
Sewing Cycle Time	17 s / with color change 14 s / without color change (17 x 15 cm pocket with 311 stitches)
Sewing Area	250 mm (L) x 250 mm (W)
Stitch Length	0.1 ÷ 12.7 mm
Thread Trimming & Catching	Yes
Thread Breakage Sensor	Yes
Looper Type	CB looper
X-Y Feeding System	Servo-drive
Stacker Capacity	Approx. 50 pieces
Creasing Gauge Exchange Time	Approx. 5 minutes
Internal Memory Capacity	1000 patterns
Display	LCD 15" color touchscreen
Sewing Pattern Designing	Directly on machine display
Operating System	OS Embedded Windows
USB Port for Patterns	Yes



### Distributor

### World

### Headquarters

**AMF Reece CR, s.r.o.**

Tovární 837/9c  
798 11 Prostějov  
Czech Republic

Phone:

+420 582 309 275

Fax:

+420 582 360 608

E-mail:

marketing@amfreece.com

**Website: [www.amfreece.com](http://www.amfreece.com)**