

PFAFF

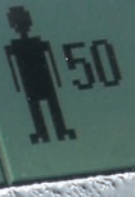
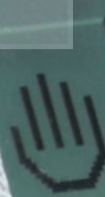
AERMEL 6.12.

Special work units for the production
on blazers, jackets and coats

3801 Integrated sewing unit for pre-gathering
sleeves and bridle-taping armholes

3822 Integrated sewing unit for run-stitching
and trimming the front edges

3827 Integrated sewing unit for closing
shoulder and side seams



PFAFF 3822



Quality demand / Areas of application:

The PFAFF 3822 provides a workplace, which, with the use of modern technology, makes the operation "run-stitch and trim jacket edges" (run-stitch seams) much more efficient and at the same time guarantees a sewing quality which can be reproduced at any time.

Heavy coat materials, jackets and costumes of different fabrics, including silk and micro-fibres, can be sewn at a high quality level with the PFAFF 3822. A feathered edge trimming is possible with the sub-class -2/44.

Equipment characteristics:

- The PFAFF 3822 is equipped with the ultra high-speed sewing unit PFAFF 487 with differential feed.
- Back-tacking device for reverse sewing or stitch condensation.
- The floating foot supports the even distribution of fullness and guarantees smooth seams.
- **Differential top feed**
 - Due to the differential top feed it is possible to recall or program the desired fullness manually (by a knee switch).
 - The keyboard has 12 keys for the application of fullness while sewing manually. With keys 1-6 the fullness is applied in the bottom ply and with keys 7-12 the fullness is applied in the top ply
 - By operating the knee switch, it is possible to change between flat sewing and gathering as required.
- **Edge trimming device**
 - Regular cutting: 5.0 mm trimming margin on both material plies (sub-class -2/42)
 - Feather edge cutting: 3.5 mm on the top and 6.5mm on the bottom material ply (sub-class -2/44)
- **The control panel**
 - Touch-screen-control-panel P1 with integrated SD card reader and USB-Slot
Easy data transfer (from machine to machine) by a SD-card or an USB stick
 - Programme selection:
 - 0 = manual sewing
 - 1 and 2 = sewing with installed programmes (knee switch)
 - 3 to 49 = programmed sewing (with up to 15 seam areas for the left and right seam)
 - Seam parameters such as amounts of fullness or the number of stitches are combined in one program.



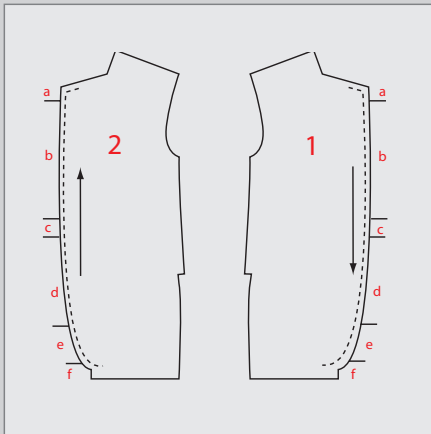
Advantages:

- As fullness can be applied to the top or bottom ply, the usual basting and clamping is not necessary.
- Precise reproducible application of fullness at any time with the use of the keyboard.
- Smooth seams due to the use of a floating presser foot.
- Exact curves at the tip of the lapels on double-breasted jackets by switching to stitch condensation.
- Flat, perfect edges with no pressure marks when using the feather edge trimmer on the sub-class -2/44.
- Storing of seam sequences in conjunction with the touch-screen control panel on sub-classes -2/42 and -2/44.
- This guarantees identical processing of different styles and sizes. And the machine can be adapted to a variety of materials.
- The seam area can be adjusted individually by teach-in-programm



PFAFF 3822

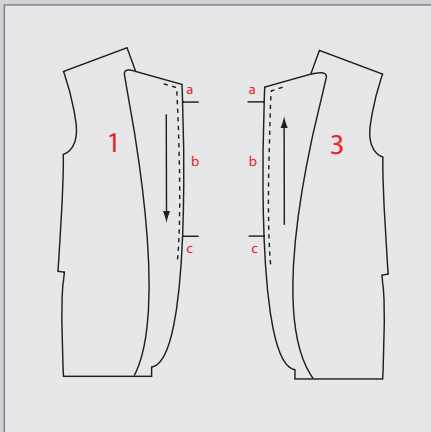
Work method:



Sewing on front section

- a fullness on lapel edge from below
- b flat sewing
- c fullness at waist from below
- d flat sewing
- e fullness along course of the edge from above
- f flat sewing

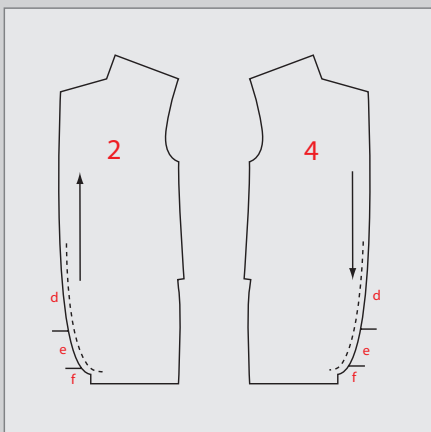
Excess facing material on the lapel is used for positioning/ matching checks or stripes.



Combined sewing on facings and front section

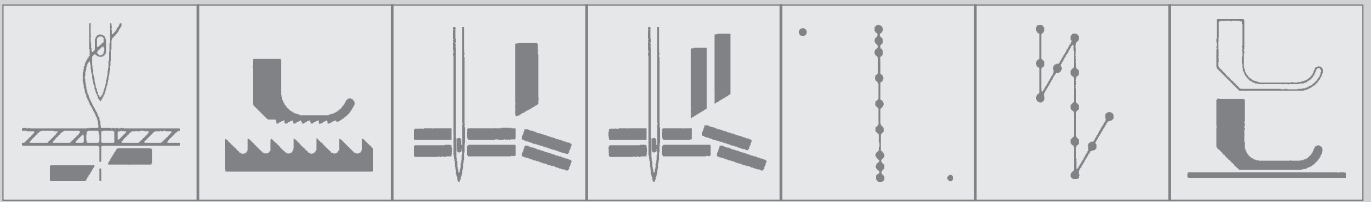
- a fullness on lapel edge from above
- b flat sewing
- c fullness at waist from above

By sewing on the front facing it is easy to recognize the run of checks and stripes.



- d flat sewing
- e fullness along course of the edge from above
- f flat sewing





Sub-classes 3822:	-2/42	-2/44
Product number	901-3822-021/001	901-3822-020/001
Edge trimmer, trimming margin 5 mm	✓	
Feather edge trimmer trimming margin 3.5 and 6.5 mm		✓
Sewing head with differential top feed	✓	✓
Touch-screen control panel P1 for creating and storing up to 49 sewing programs	✓	✓
Thread trimmer -900/51	✓	✓
Automatic presser foot lift -910/04	✓	✓
Differential feed for applying fullness on top or bottom	✓	✓
Seam backtacking or stitch shortening	✓	✓
20-key keyboard for manual selection of fullness amounts (6 keys each for fullness at top or bottom)	✓	✓
Drive: ECO Drive	✓	✓



Performance data:

- Run stitching and cutting (-2/42):
265 jacket front parts in 8 hours
- Run stitching and feathered cutting (-2/44):
220 jacket front parts in 8 hours

PFAFF 3827



Quality demand / Areas of application:

The shoulder and side seams should have fullness in certain seam areas (rearward shoulder seam and the upper part of the side seam) and should be sewn even at other parts. To meet these requirements the PFAFF 3827 provides a fully developed workplace which precisely fits the required working processes and quality demands. Furthermore it serves as an important manufacturing resource which make little demands on the user and requiring little training.

Equipment characteristics:

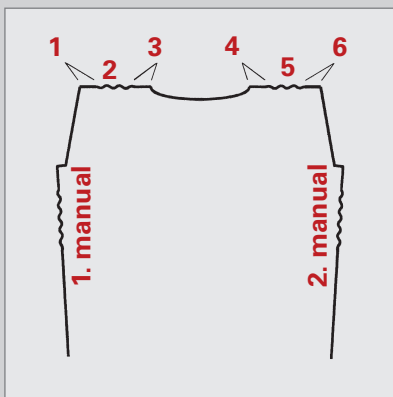
- The floating foot supports the even distribution of fullness and guarantees smooth seams.
- Edge guide with automatic seam width adjustment when changing from the side to the shoulder seams (on sub-class -4/34)
- Semi-automatic operating cycles (adjustment of the edge guide, seam end using sensor, mirror-image seams), without complicated seam programming
- Absolutely identical shoulder seams, due to automatic mirror image seams
- In case of need it can also be used for closing seams
- Separately adjustable pressure on the presser foot and on the vibrating presser foot

Advantages:

- Easy handling and short training times due to part automation
- Fullnesses can be defined precisely and recalled
- Absolute identical shoulder seams due to seam reflection
- Also applicable to "usual seams"



Work method:



Semi-automatic process:

closing side and shoulder seams on jackets

1. manual { Sewing begin on the left side seam
Seam end of the side seam,
with optional backtack

Start of the automatic shoulder seam by using the knee switch

- 1 Sewing begin on the left shoulder seam
- 2 Automatic engagement (stitch count) of the preselected fullness
- 3 Automatic disengaging of fullness and triggering of the seam end via light barrier
- 4 Sewing begin on the right shoulder seam (the stored data of the left shoulder seam is sewn as a mirror image)
- 5 Connecting the preselected fullness
- 6 Automatic triggering of the seam end via photoelectric cell

2. manual { Sewing begin on the right side seam, with manual triggering of fullness application if desired
Seam end of the side seam,
with optional backtack

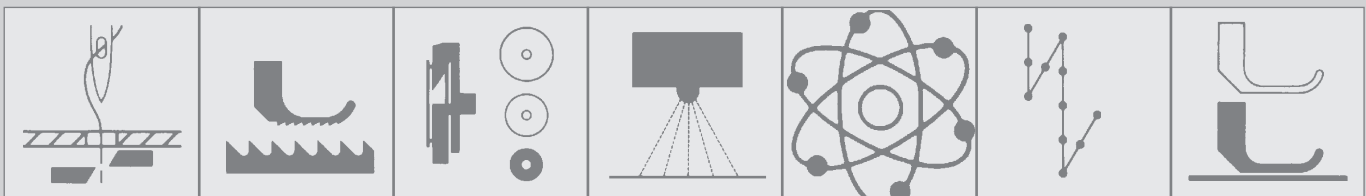


PFAFF 3827

Sub-classes 3827:	-4/33	-4/34
Product number:	901-3827-111/001	901-3827-110/001
Sewing head with differential top feed	✓	✓
Control panel S3	✓	✓
Thread trimmer -900/99	✓	✓
Bartacker -911/97	✓	✓
Fullness pre-selection -918/14	✓	✓
Side and shoulder seams on jackets, ladies' jackets, blazers and similar articles	✓	✓
General closing seams on outerwear	✓	✓
Light barrier	✓	✓
Motor type: P323 ED	✓	✓
Edge guide 2-stage, switching over the seam program		✓
Edge guide, mechanical	✓	

Performance data:

- 250 side and shoulder seams in 8 hours
- 500 shoulder seams in 8 hours



PFAFF 3801



Quality demand / Areas of application:

The pre-gathering of sleeves and the bridle-taping of armholes provide the basis for an ideal fit of the sleeve. For these requirements the PFAFF 3801 provides a fully developed workplace which is precisely adjusted to the necessary working processes and quality demands and therefore serves as an important manufacturing resource for the work step 'pre-gathering sleeves and bridle-taping armholes'.

Equipment characteristics:

• Differential top- and bottom feed:

- Due to the differential feed it is possible to recall or program the desired fullness manually (by knee switch) or on the control panel
- The floating foot supports the even distribution of fullness and guarantees smooth seams.
- By operating the knee switch, it is possible to change between flat sewing and gathering as required, with programmable sewing the change happens automatically after Teach-in.

• The control panel:

- Touch-screen-control-panel P1 with integrated SD card reader and USB slot
Easy data transfer (from machine to machine) by a SD-card or an USB stick
- Programme selection:
 - 0 = manuel sewing
 - 1 and 2 = sewing with installed programmes (knee switch)
 - 3 to 49 = programmable sewing
(with up to respectively 15 seam sections for the left and right seam)
- Seam parameters such as amounts of fullness or the number of stitches are combined in one program.

Advantages:

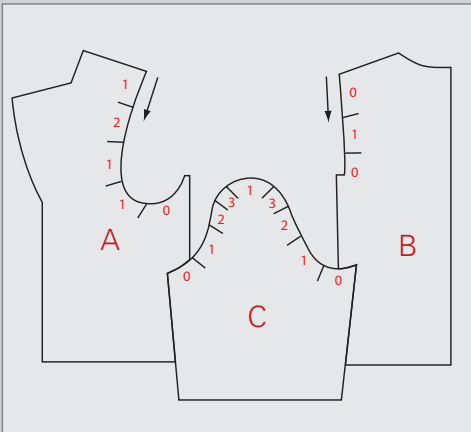
- Sleeves can be sewn both flat or closed.
- The sewing process can be followed and controlled in the display.
- The sewing program is created using the Teach-In process or via direct data input on a standard size.
- Size grading and mirroring (left/right) take place automatically. The operator is guided through these processes via simple symbols.

PFAFF 3801

The PFAFF 3801 offers the following alternatives for bridle-taping work on the armhole:

- Feeding the bridle tape (with metering device) without tension: No. 91-189 222-70/895 (optional for -3/07 and -3/071). The tape is cut manually.
- Automatic bridle tape feed and tape cutting, even in the material, with sub-class -11/071.
- When pre-gathering sleeves while simultaneously sewing in an interface strip, a bridle tape is not necessary. In this case it is recommended to use the machine with thread trimmer (-3/071).
- The programmed application of fullness and attaching the sleeve can be carried out in one operation with the PFAFF 3834-14/31 and PFAFF 3734-12/31.

Work method:



A + B Bridle taping
C Pre-gathering of sleeves

0 flat sewing
1 very low fullness
2 low fullness
3 stronger fullness

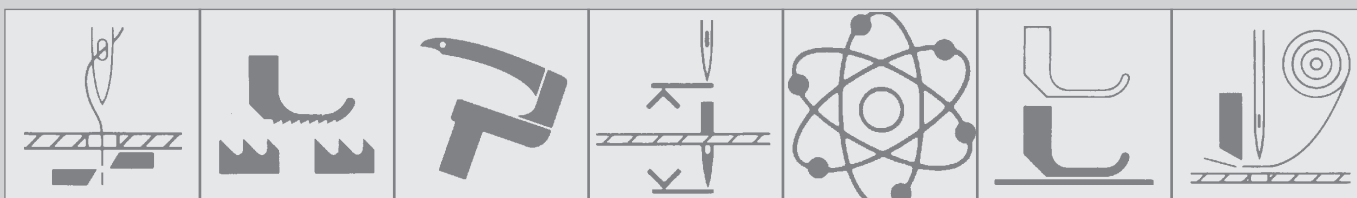


Sub-classes 3801:	-3/07	-3/071	-11/071
Product number:	901-3801-022/001	901-3801-021/001	901-3801-020/001
Sewing head with differential bottom feed and top feed	✓	✓	✓
Touch-screen control panel P1 for creating and storing up to 49 sewing programs	✓	✓	✓
Thread trimmer -900/71	–	✓	✓
Automatic presser foot lift -910/05	✓	✓	✓
Needle positioner -913/52	✓	✓	✓
Height-adjustable profiled stand	✓	✓	✓
Edge guide 91-187 204-71/895	✓	✓	✓
Tape reel bracket 91-084 366-71/895	✓	✓	✓
Tape feeder 91-189 222-70/895	●	●	–
Sewing drive (QE 6040) 71-5235-5524	✓	✓	✓
Tape feed and cutting unit	–	–	✓

● = option

Performance data:

- Pre-gathering closed sleeves with interface strip
500 pairs in 8 hours.
- Pre-gathering flat sleeves (with interface strip)
550 pairs in 8 hours.
- Bridle taping armholes (jacket backs and front parts)
500 pairs in 8 hours.



Technical data 3801:

Sewing head:
PFAFF 5487/5489

Max. speed:
3,200 s.p.m.

Stitch type:
401 (double chainstitch)

Max. stitch length:
2.0 mm

Needle system:
4463-35

Drive:
DC-Antrieb ECO Drive
QE 3760

Power requirements:
max. 1.0 kW

Working air pressure:
6 bar

Power supply:
230V / 50 - 60 Hz
AC

Technical data 3822:

Sewing head:
PFAFF 487

Max. speed:
4,000 s.p.m. (-2/42)
3,200 s.p.m. (-2/44)

Stitch type:
301 (lockstitch)

Max. stitch length:
2.7 mm

Needle system:
134 KK

Drive:
DC-Antrieb ECO Drive
QE 3760

Power requirements:
1.0 kW

Working air pressure:
6 bar

Power supply:
230V / 50 - 60 Hz
AC

Trimming margin:
5.0 mm (-2/42)
6.5 x 3.5 mm (-2/44)

Technical data 3827:

Sewing head:
PFAFF 487

Max. speed:
4,800 s.p.m.

Stitch type:
301 (lockstitch)

Max. stitch length:
4.5 mm

Needle system:
134 KK

Drive:
DC-Antrieb ECO Drive
QE 3760

Power requirements:
1.0 kW

Working air pressure:
6 bar

Power supply:
230V / 50 - 60 Hz
AC

Net weight:
ca. 107 kg



PFAFF Industriesysteme und Maschinen GmbH

Hans-Geiger-Str. 12 – IG Nord
D-67661 Kaiserslautern

Telefon: +49-6301/3205-0
Telefax: +49-6301/3205-3171
E-mail: info@pfaff-industrial.com