



BRUCE R2

- 1 Nadel Steppstich schnellnäher
- Elektronik
- stich Länge max. 5 mm
- Anfang- Endverriegelung
- 220 Volt Elektronik Direct-Drive Motor
- Geschwindigkeit max. 5000 S.p.m.
- Int-Nählicht, 5xSpuhle, 4xNähfuss, 10xNadel
- Montiert Tisch .55x105 cm
- Garantie. 2 Jahre

Preis . 900,- EUR excl. MwSt.

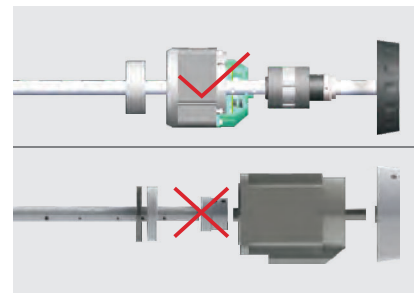
R2

Computerized Lockstitch Machine With Three Automatic Functions

Economical and practical, efficient and stable








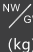


Factory reset



Stable and reliable

Specification

							A	M	H		
			(mm)	(mm)	(S.p.m)					(mm)	(kg)
R2-CZ	Dbx1 11-18#	2	5	5-13	5000	●	●			671×248×550	34/42
R2-CHZ	DP×5 18-21#	2	5	5-13	3500			●		671×248×550	34/42

Auto thread trimming, auto reverse, auto presser foot lifter and electronic thread tension are equipped as standard.

A: for light material, M: for medium material, H: for heavy material.